

What is Fall Armyworm and why is it a threat ?



Fall Armyworm is a pest that feeds on

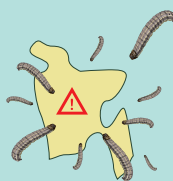
80
types



of crops and plants, but prefers maize.



Knowing how to identify Fall Armyworm is key to the fight against this pest. This guide provides simple information on how you can identify Fall Armyworm at different ages.



It has now spread throughout many parts of India and has entered Bangladesh.

Scientists expect this pest will continue to spread throughout Asia.



Damaged maize whorl



Fall Armyworm eating maize leaves



Fall Armyworm may leave behind red-orange colored 'frass' after eating



Fall Armyworm damaging a maize cob

Funded by



USAID
BILL & MELINDA GATES Foundation



Partners

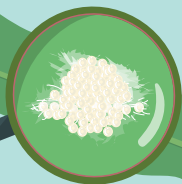


RESEARCH PROGRAM ON
Maize

How can I identify Fall Armyworm?

Egg masses

Egg masses are very small and white, and are often found on the underside of leaves.



Hatching from eggs

When the eggs are ready to hatch, they are a similar color as cigarette ash.

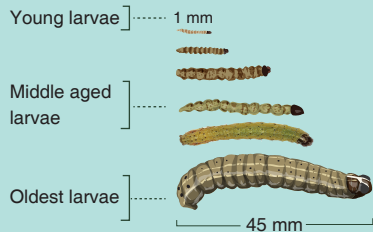


Young Fall Armyworms

Hundreds of small Fall Armyworms with black heads will crawl out of hatched egg masses.

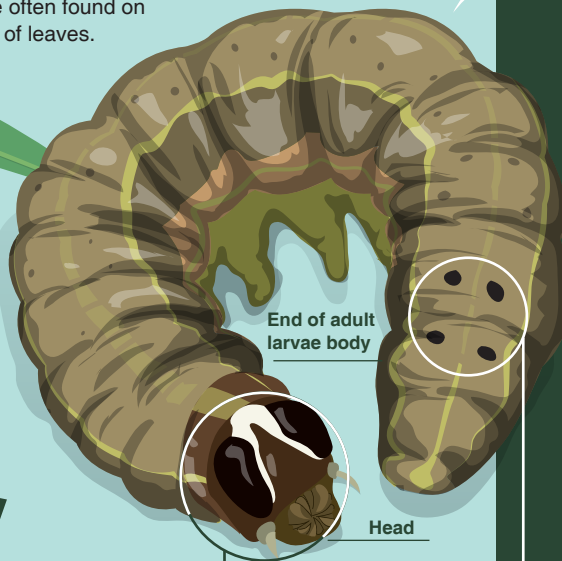


Growing Fall Armyworm



Older Fall Armyworm

Older Fall Armyworms can have a white mark on their heads



End of adult larvae body

Head

They also have **four large dots** in a square on the end of their body.

Pupae are red-brown color



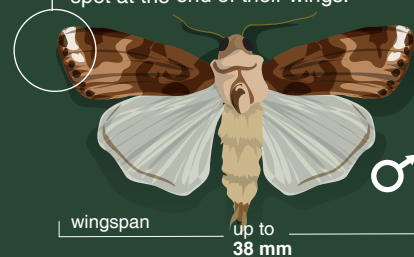
Red - brown colored Fall Armyworm pupae can be found in the soil before Fall Armyworm turns into an adult.

You may also find cocoons 2 to 8 cm deep in the soil that look like this.



Adult moth

Adult male moths have a white spot at the end of their wings.



Female moths are less colorful and do not have a white stripe on their wings

